

HART
Alternative Analysis
Update Study
Northeast and West Corridors

Presentation to Westshore Alliance
August 18, 2009

Presentation Overview

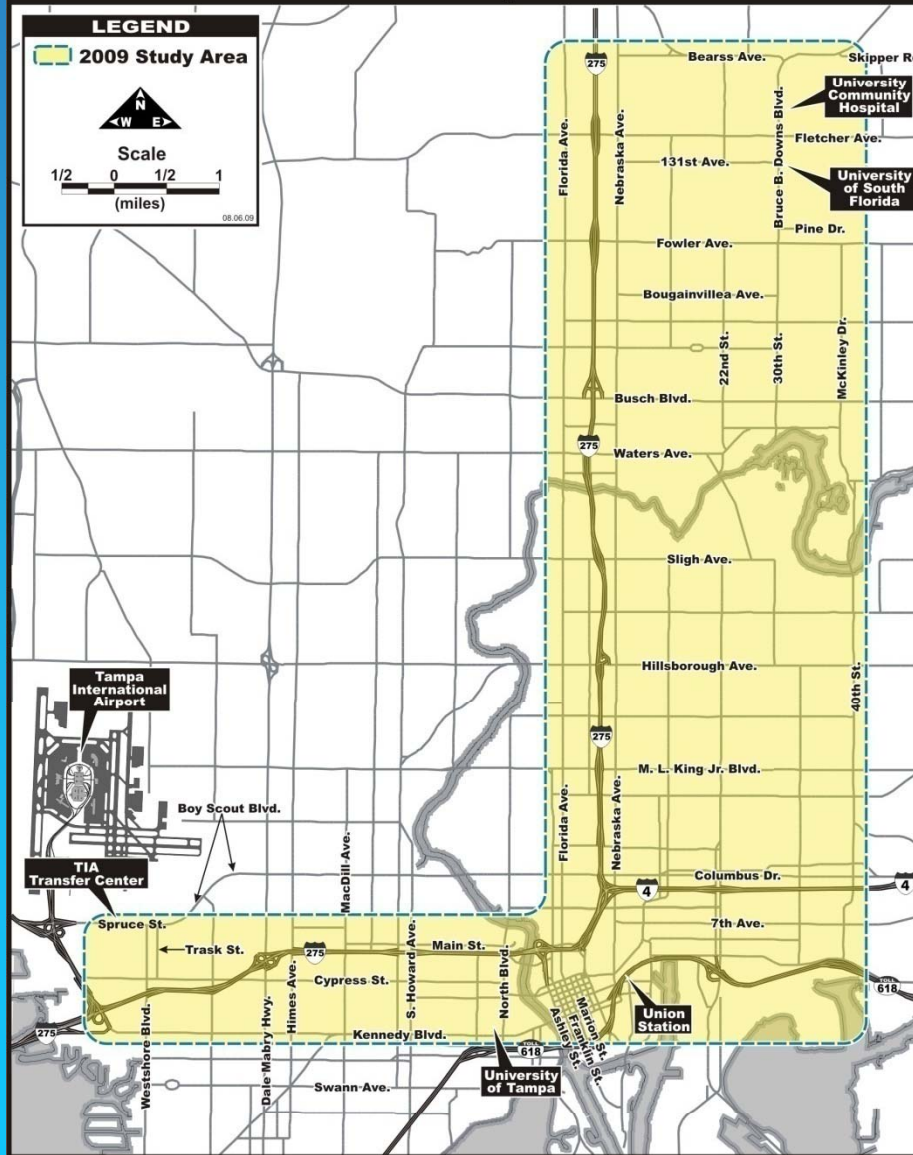
- Project Overview
- Work Effort
- Initial Activities
- Critical Issues
- Getting Involved

Project Overview

- HART Board approved undertaking Alternative Analysis study - June 29, 2009
- Major planning effort to select transit alternative that best addresses needs and opportunities
- 2 corridors under review
 - Northeast - Downtown Tampa to USF area
 - West - Downtown Tampa to Westshore

New Starts Transit Project

2009 Study Area



Project Overview

- 1st step in seeking federal New Starts funding
 - Major capital funding program for light rail
- Focused look at several alternatives
 - Alignments
 - Northeast Corridor
 - CSX, Florida, Nebraska, 40th Street, other
 - West Corridor
 - Cypress, Kennedy, I-275 median, other
 - Technologies
 - Light rail, bus rapid transit, enhanced bus

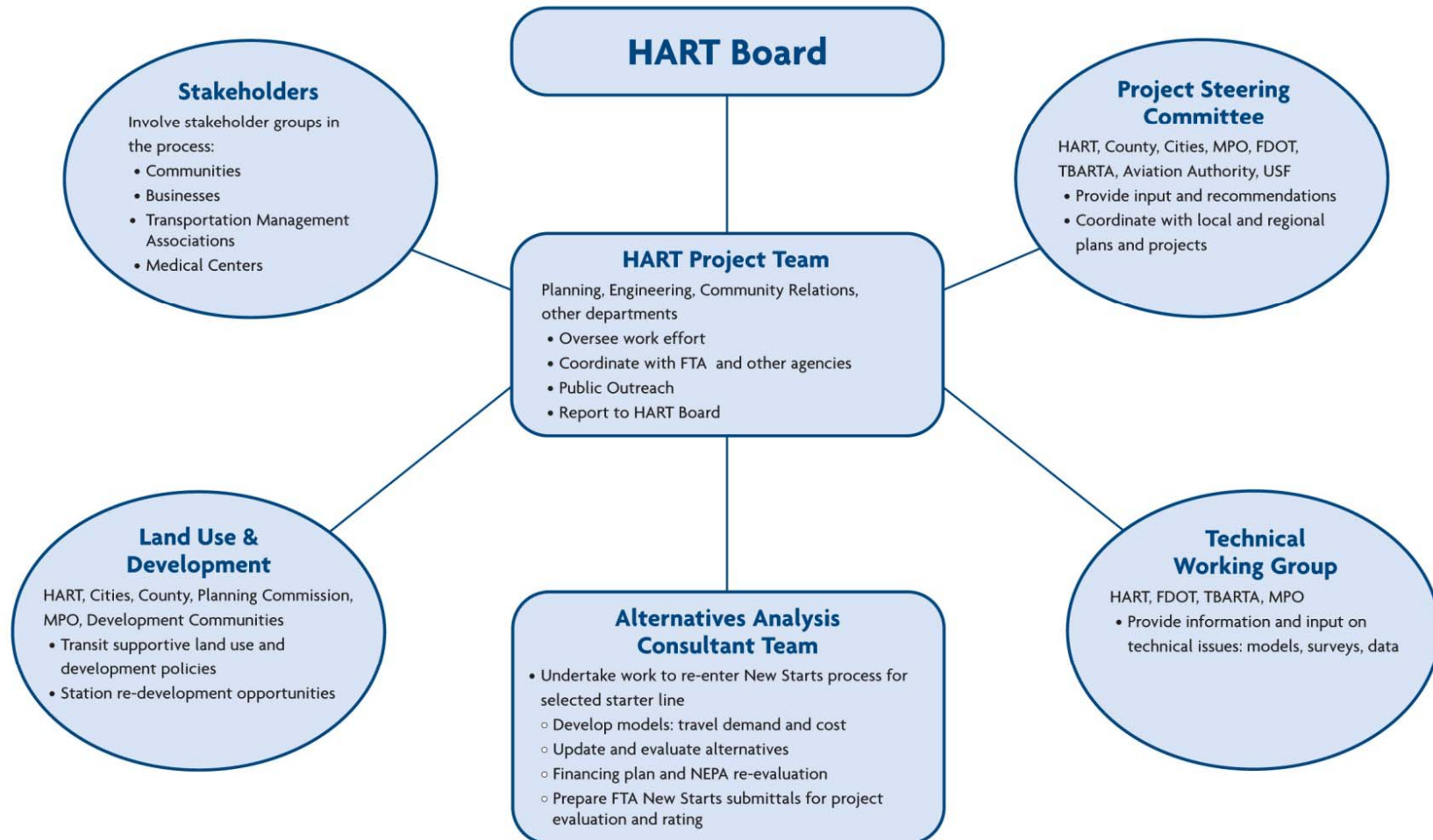
Project Overview

- If light rail is the preferred alternative, recommend starter line
- Financial plan critical element
 - Major investment and supporting transit system
 - Local funding required – capital match and long term operating

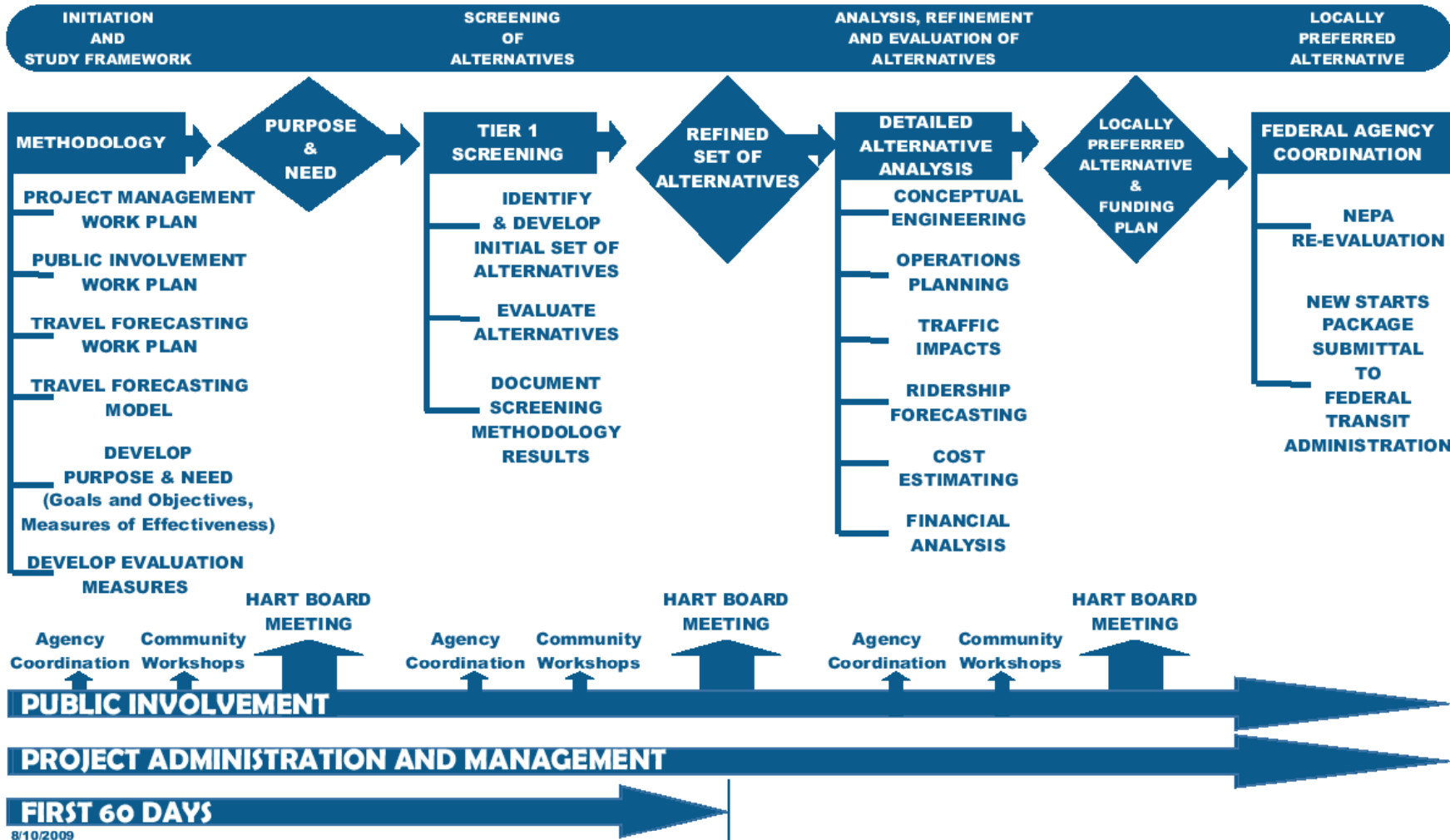
Consultant Team

- PB Americas, Inc. (Prime)
- AECOM
- Renaissance Planning Group
- Tindale-Oliver & Associates, Inc.
- Quest Corporation of America, Inc.
- Additional firms (outreach, mapping, natural and historic environment)

Project Organization



May 2009



Initial Activities

- Work Plan Finalization, including Public Outreach
 - Meeting with Federal Transit Administration – Aug 25 & 26
- Project Purpose & Need, Goals/Objectives and Evaluation Measures
 - Refinement underway
 - Important for evaluating project alternatives
- Technical Work
 - Data Collection and Analysis
 - Agency Coordination – plans and projects
 - Development of Models – cost and travel forecasting

Initial Activities

- Initial Screening of Alternatives
 - Potential alignments and technologies
 - Narrow down range of alternatives based on ‘fatal flaws’ (i.e. traffic impact, community or environmental impacts, constructability)
- Public Outreach
 - Input on project need and evaluation measures, and potential alternatives
 - Newsletter, meetings, website, open houses

Critical Issues - AA Update

- Alternatives
 - Best 'implementable' solution
 - Land Use and Redevelopment opportunities: transit supportive development
 - Important for successful project (enhanced ridership)
 - Now more important criteria in federal New Starts process
- Downtown Tampa
 - Gateway and connections, including potential high speed rail
- Federal funding
 - Intense competition nationally
 - <50% federal capital funding - recent experience
 - Starter line makes sense – approach taken in Denver, Salt Lake, Charlotte, Norfolk and other cities

Critical Issues – AA Update

- Funding plan
 - FTA requirements
 - Demonstrate reasonable plans for obtaining local funds prior to entry into Preliminary Engineering
 - 50% of local funds committed prior to entry into Final Design
 - 100% committed prior to Full Funding Grant Agreement with FTA
 - Approval of a referendum in 2010 strengthens efforts to advance project through New Starts process

Getting Involved

- Visit our website
 - GoHART.org
- Join our mailing list
- Request a presentation
- Attend an upcoming open house

www.GoHART.org