



Westshore Alliance

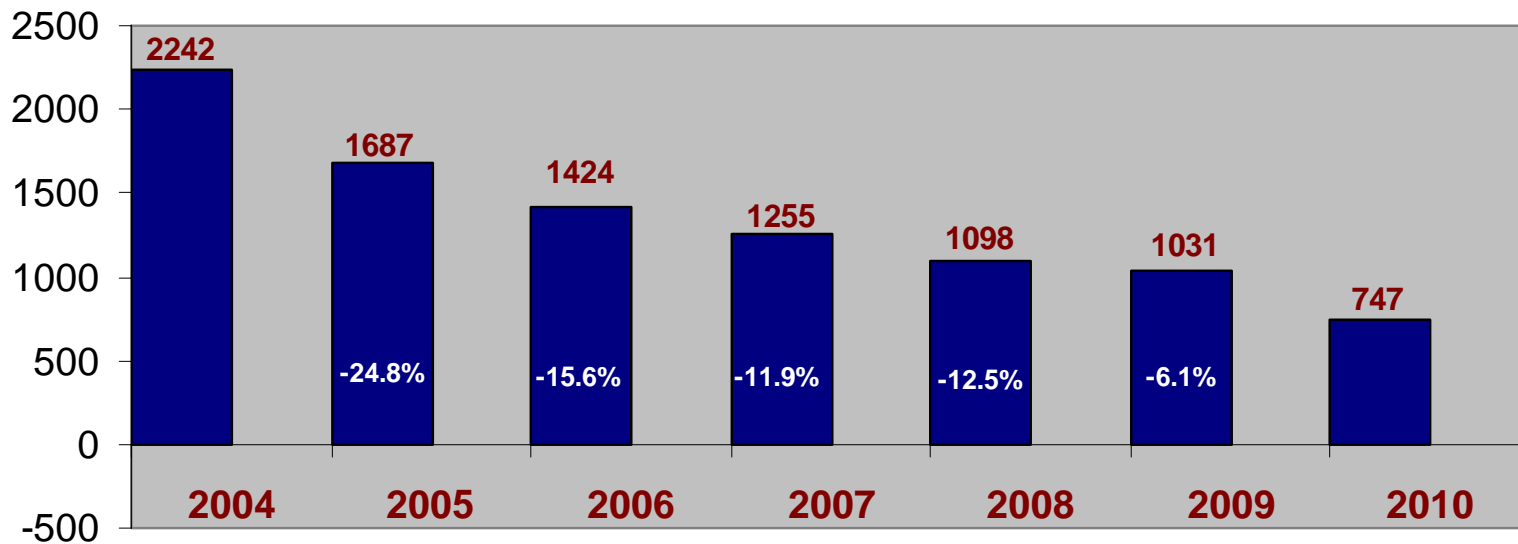
+

Tampa Police Department =  
**TRUE PARTNERSHIP**

Prepared by: Crime Analysis Unit



## Westshore Business District Part I Crime Analysis



Homicide  
Sex  
Offenses  
Robbery  
Assaults  
Burglary  
Larceny  
Vehicle  
Theft

Note: 2010 is 01/01/10 – 11/15/10

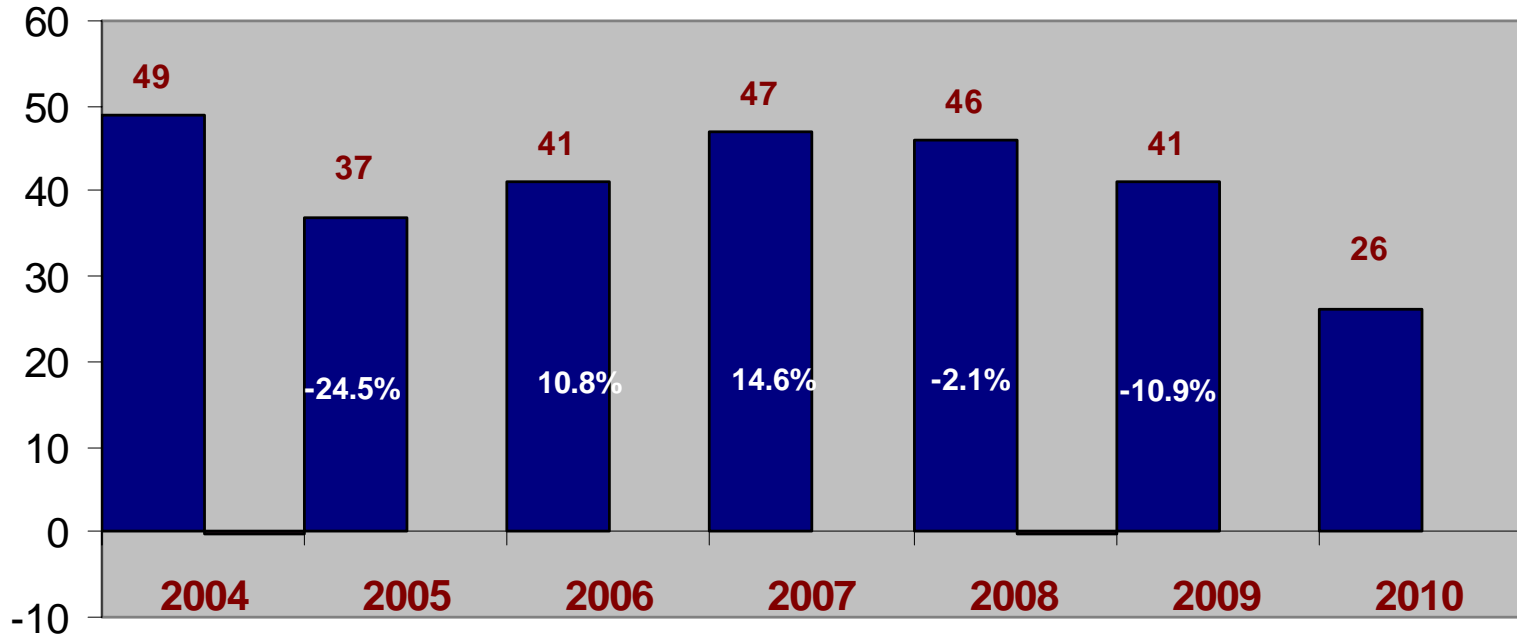


# Big Four Analysis

- Robbery
- Burglary
- Vehicle Theft
- Auto Burglary



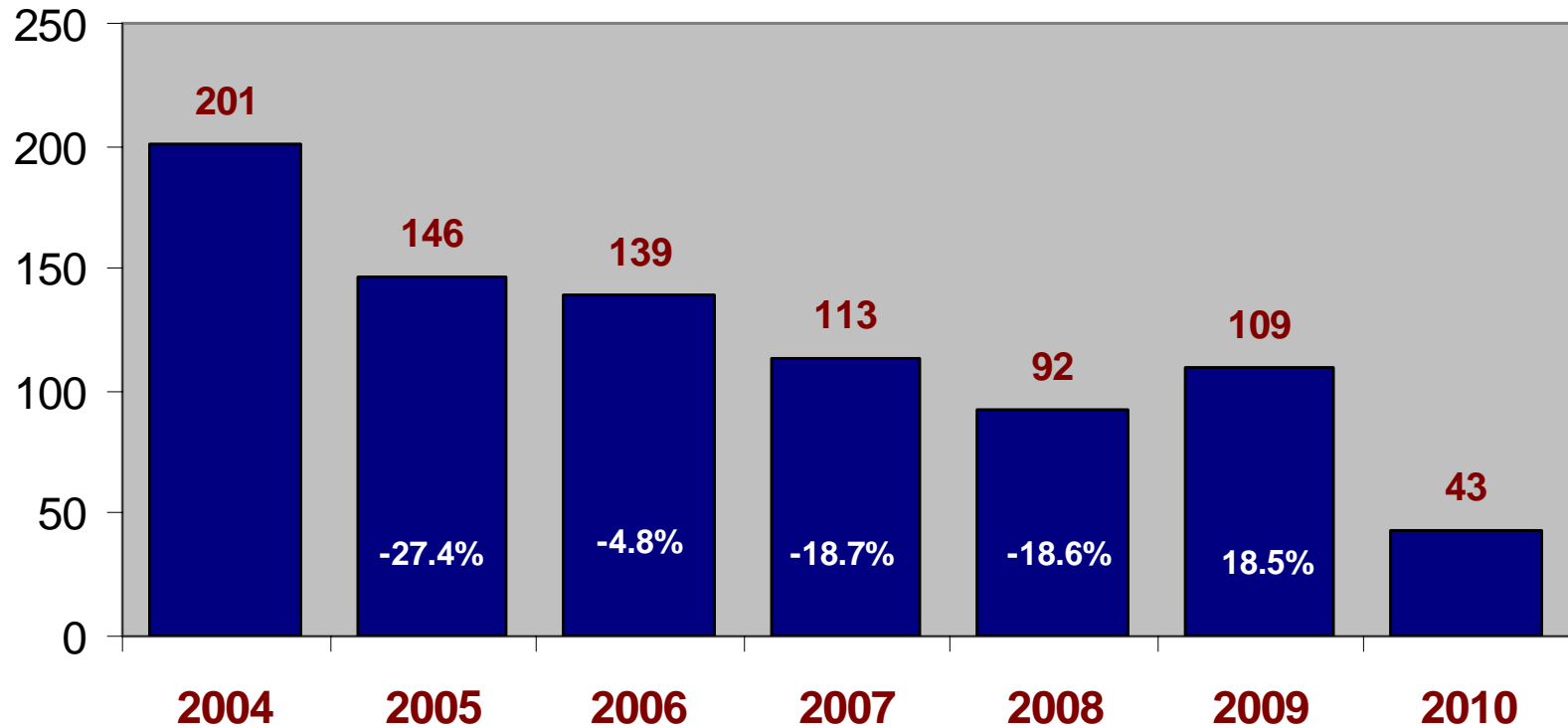
## Westshore Business District Robbery Analysis



Note: 2010 is 01/01/10 – 11/15/10



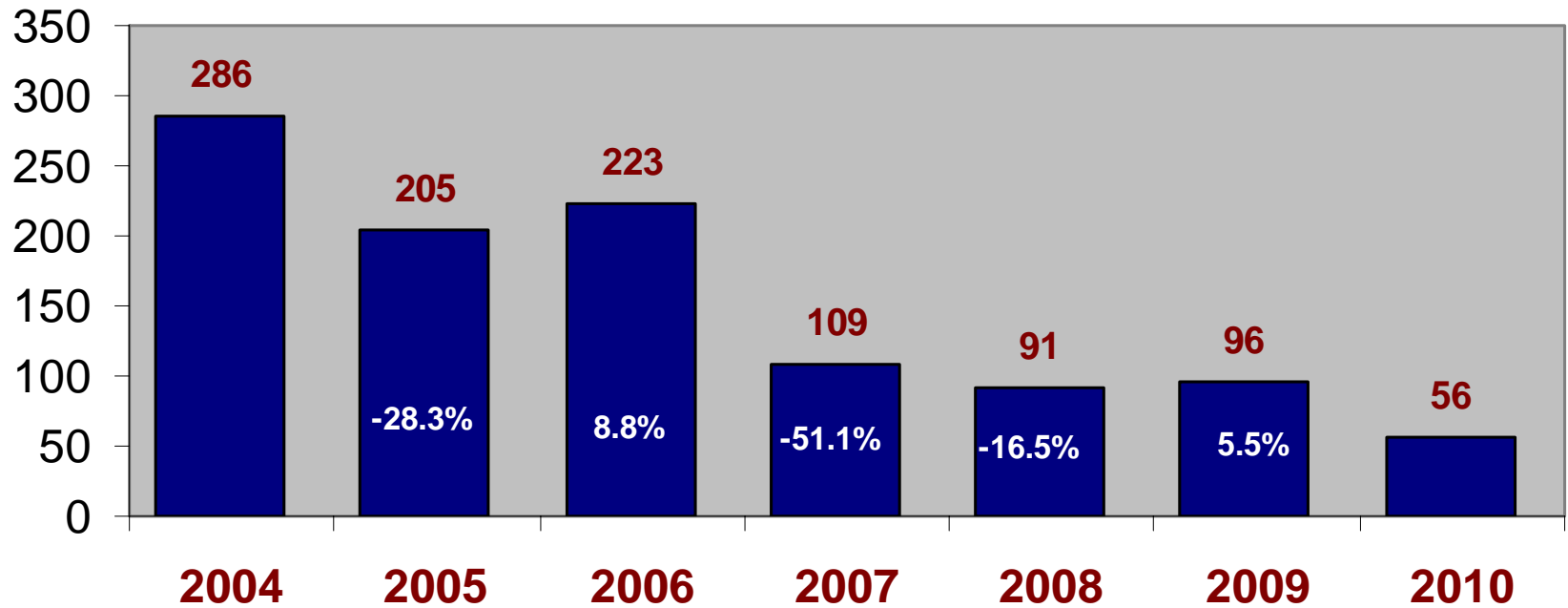
## Westshore Business District Burglary Analysis



Note: 2010 is 01/01/10 – 11/15/10



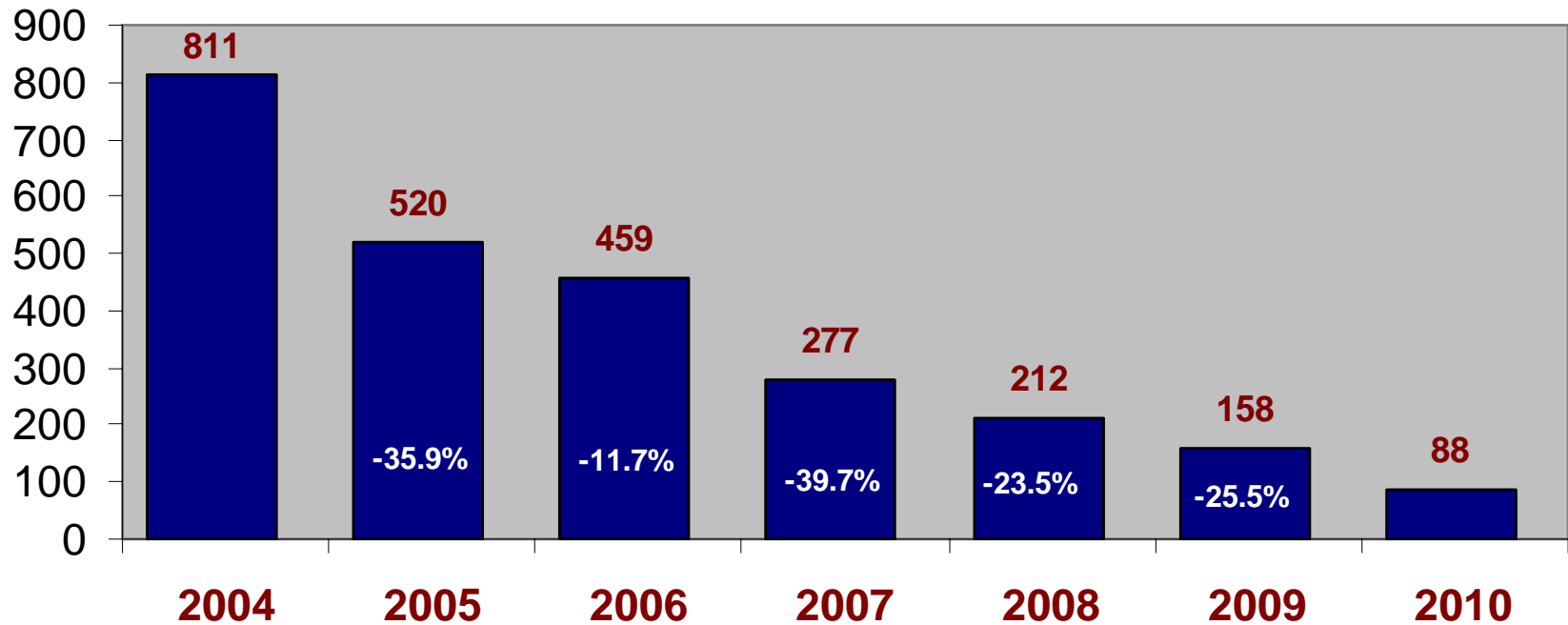
# Westshore Business District Vehicle Theft Analysis



Note: 2010 is 01/01/10 – 11/15/10



# Westshore Business District Auto Burglary Analysis



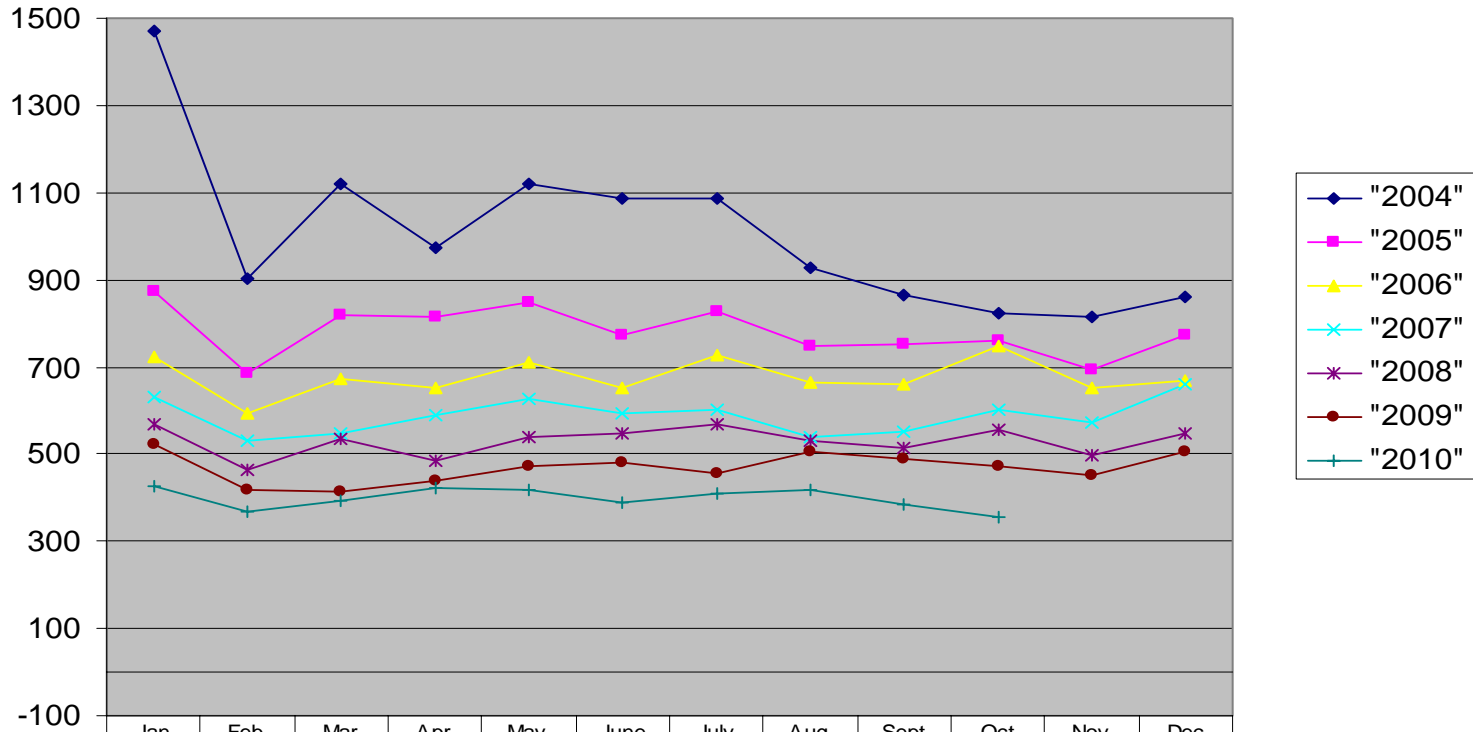
Note: 2010 is 01/01/10 – 11/15/10



# District 1

## Six Years of Crime Reduction

### District One Monthly Comparison



	Jan	Feb	Mar	Apr	May	June	July	Aug	Sept	Oct	Nov	Dec
"2004"	1470	901	1120	975	1118	1085	1087	927	867	822	816	859
"2005"	872	686	818	815	850	772	829	750	753	762	694	774
"2006"	725	593	672	654	709	653	726	663	660	747	654	667
"2007"	632	529	548	591	625	592	602	541	553	600	572	661
"2008"	568	466	537	483	539	547	568	530	514	555	498	549
"2009"	522	417	412	440	474	479	457	506	489	473	453	504
"2010"	426	369	393	424	419	390	411	418	383	357		

# Tampa Police Department Thanks You For Your Continued Support

