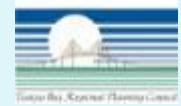


WESTSHORE DISTRICT

Public Realm Master Plan

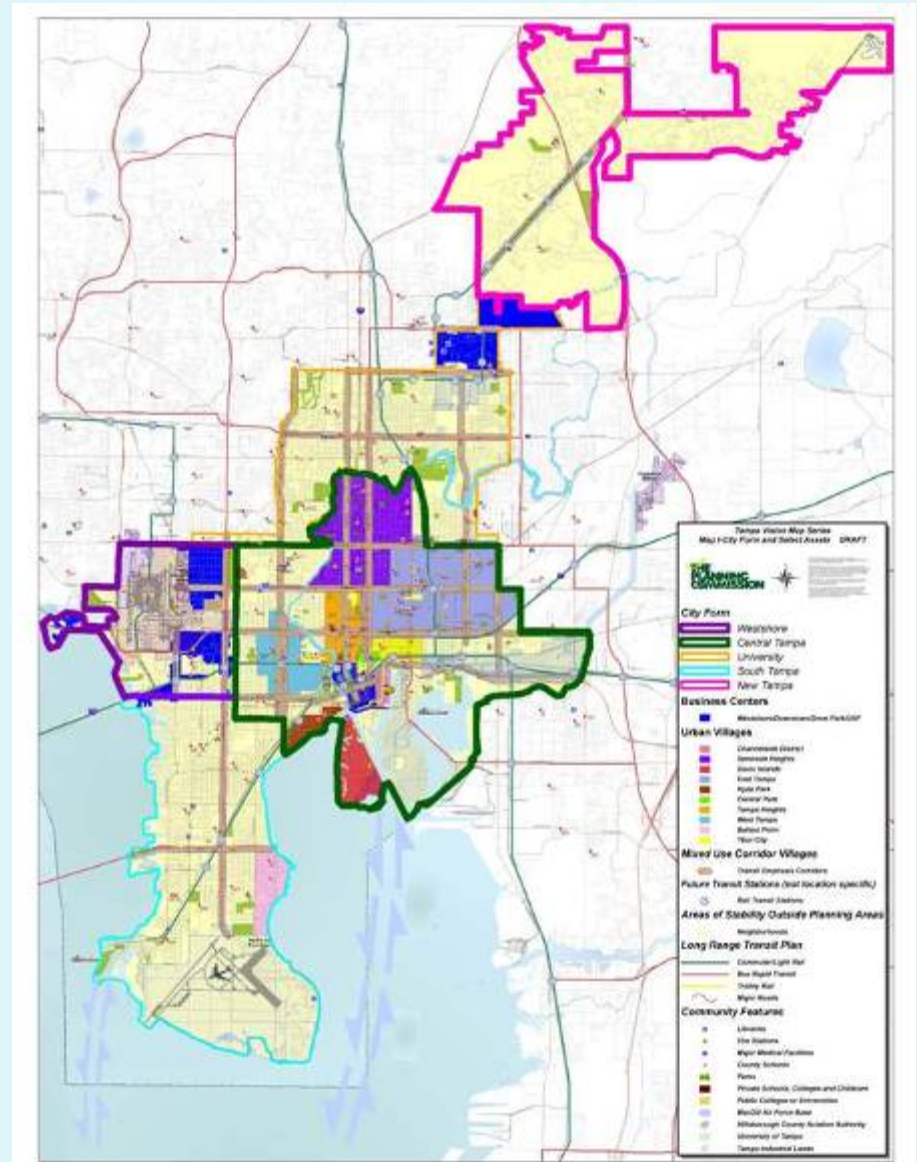
March 28, 2013



Why a Master Plan?

Planning for growth

- City Comprehensive Plan targets Westshore, USF & Downtown for growth
- Westshore areawide DRI & Westshore Overlay address private development
- There is *no plan* to improve Westshore public spaces

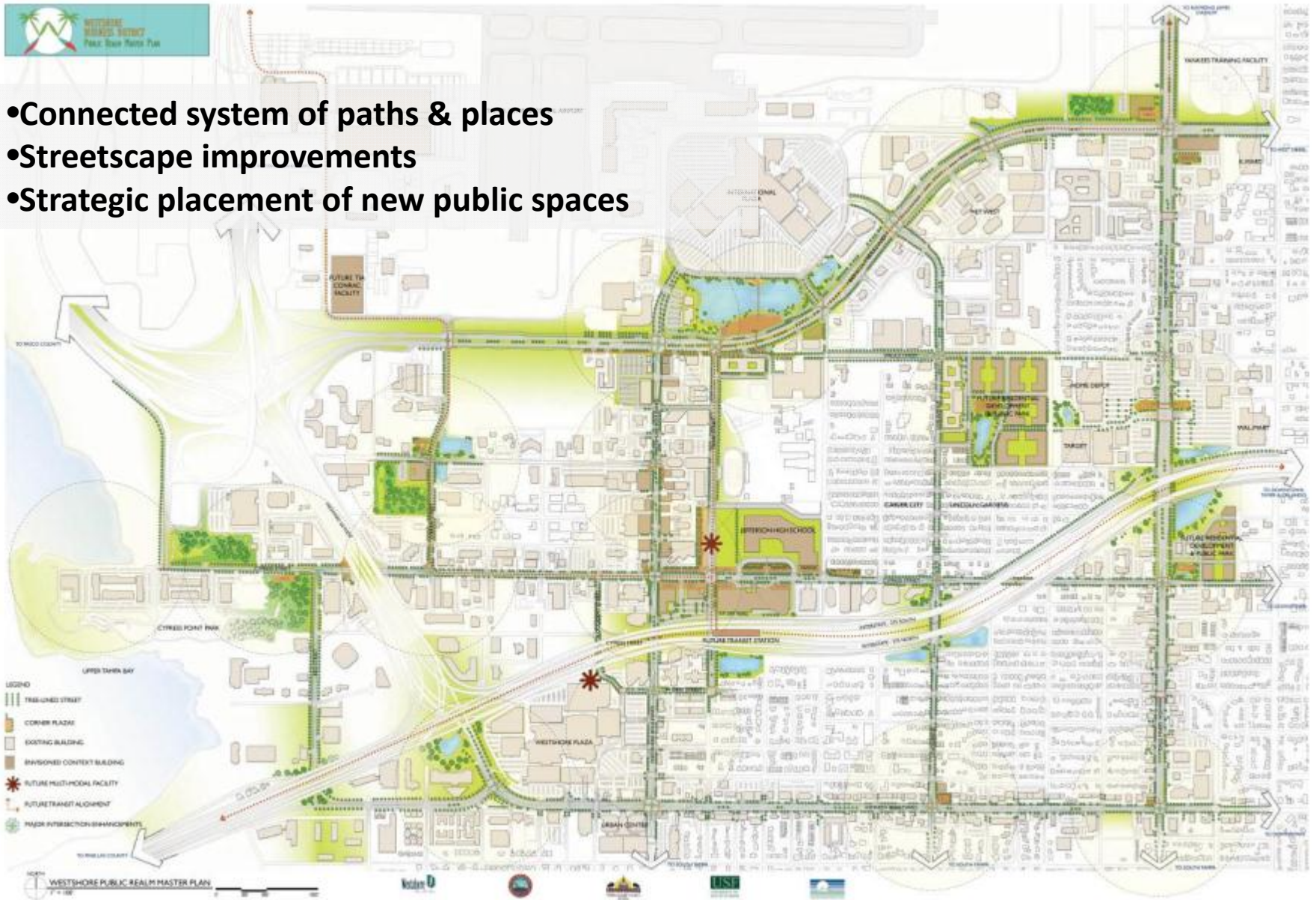


About the Master Plan

- **Long term vision**
- **Focus on public realm improvements**
- **Jointly funded by**
 - **Westshore Alliance**
 - **Hillsborough County**
 - **City of Tampa**
- **Lead Consultant**
 - **USF School of Architecture & Community Design**

Westshore District Public Realm Master Plan

- Connected system of paths & places
- Streetscape improvements
- Strategic placement of new public spaces



Envisioned Public Realm Enhancements



EXISTING CONDITION ON WESTSHORE BOULEVARD



PROPOSED CONDITION ON WESTSHORE BOULEVARD

- Wider sidewalks
- Landscaped medians
- Street trees, paving accents & bio-swales
- Narrower travel lanes
- Lowered speed limits
- Shared bus and bicycle lanes
- Intersection enhancements & pavement markings
- Street furnishings and pedestrian amenities
- New open space features
- Parking lot screening (4' x 10' temporary living wall panels)



PROPOSED TYPICAL CONDITIONS WESTSHORE BOULEVARD INTERSECTION

Envisioned Conditions

I-275/West Shore Boulevard



Envisioned Conditions

Lois Avenue



EXISTING CONDITION ON LOIS AVENUE



PLANTED MEDIANS

PEDESTRIAN LIGHTING

WIDENED SIDEWALKS WITH SHADE TREES

DEDICATED BIKE LANE

PROPOSED CONDITIONS ON LOIS AVENUE



PEDESTRIAN CROSSWALKS AT ALL SIDE STREETS

COMBINED SUNSHADE STRUCTURE

STREETLIGHT WITH PEDESTRIAN LIGHTING

LIVING WALLS-PRACTICAL NOISE SCREENS

PROPOSED TYPICAL NEIGHBORHOOD STREET INTERSECTION

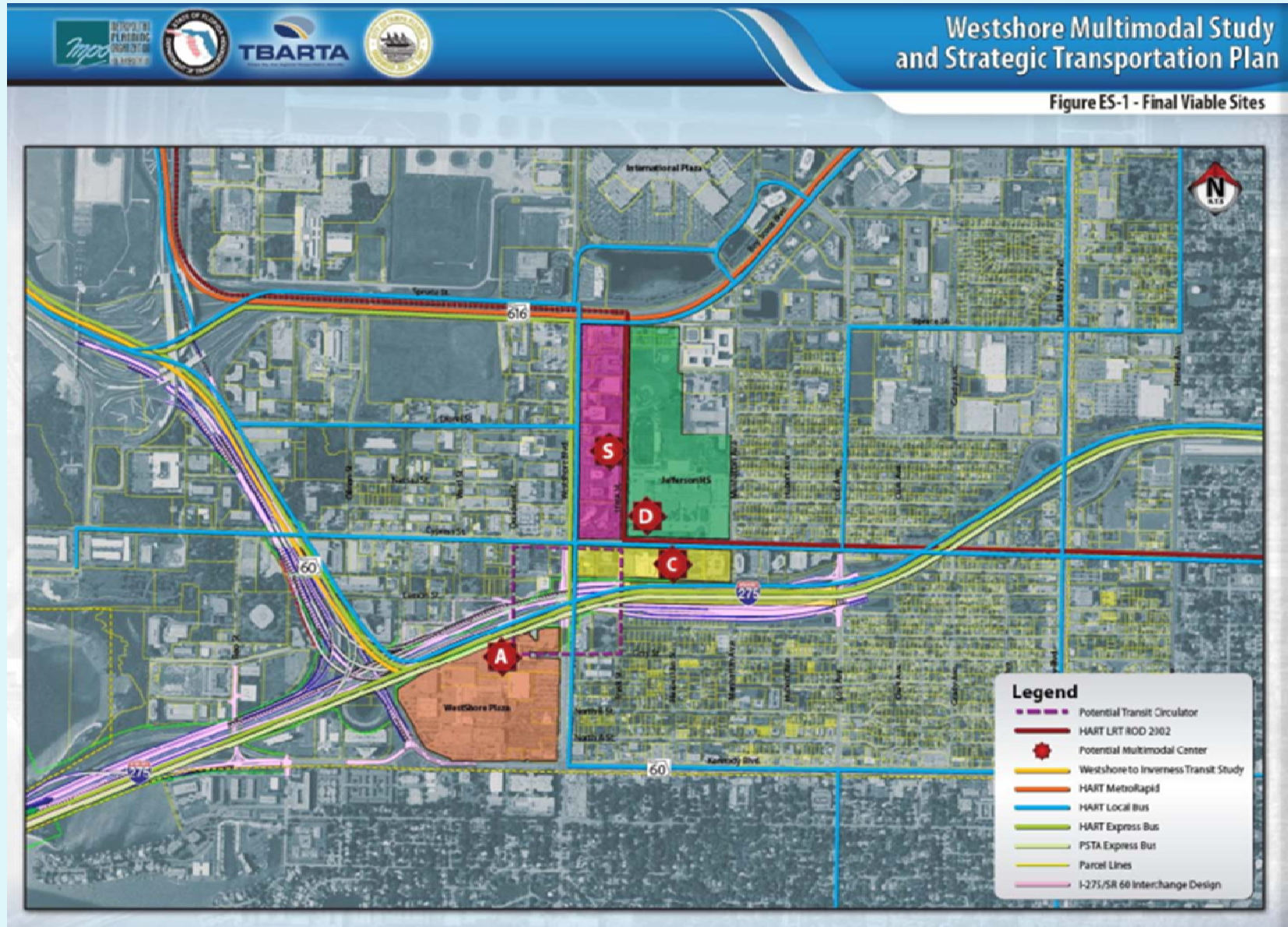
Envisioned Conditions

I-275/Lois Avenue Bridge Underpass



Connecting to Transit

Proposed Multimodal Sites



Envisioned Conditions

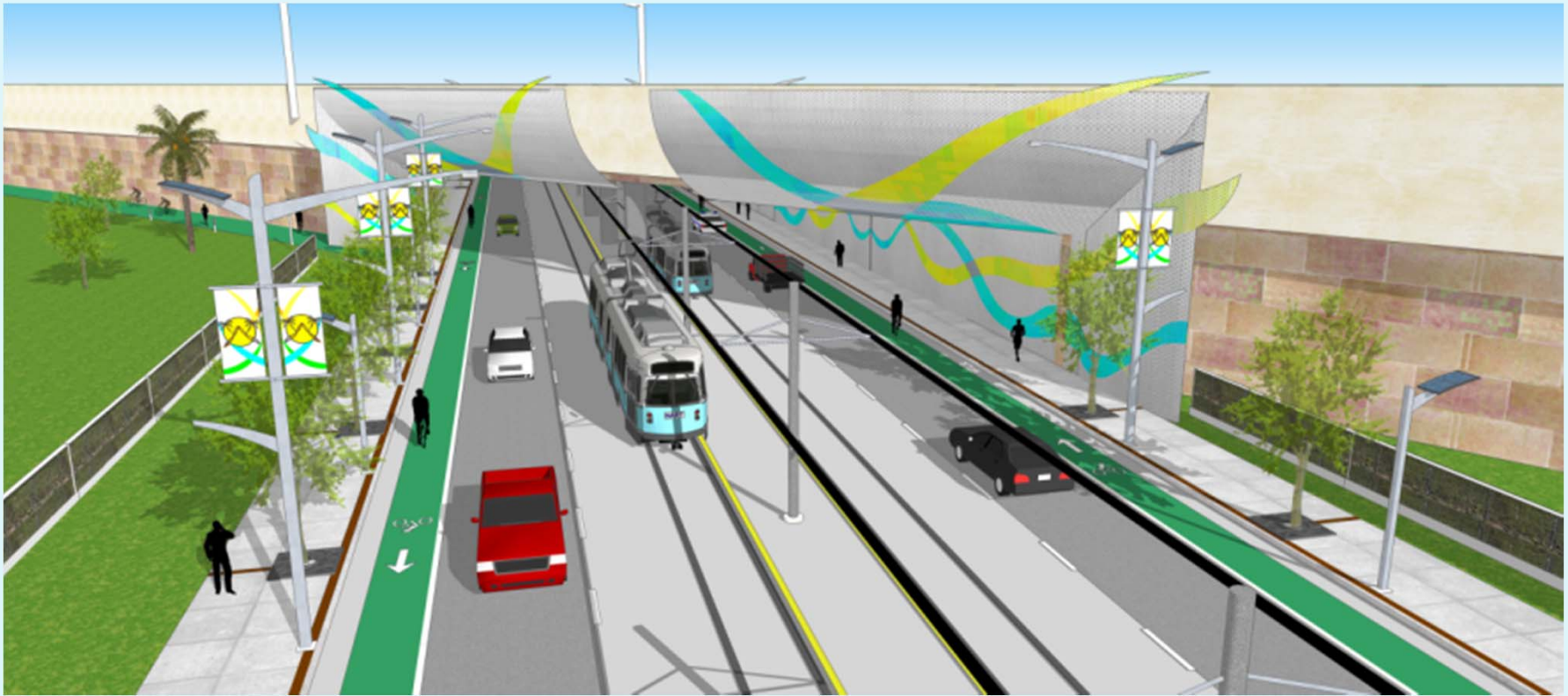
Cypress Street/West Shore Blvd. Intersection



Envisioned Conditions Cypress Street/West Shore Blvd. Intersection



Envisioned Conditions I-275 /Cypress Street Bridge



Envisioned Conditions

Dale Mabry Highway Commercial Center

- Commercial Center Public Spaces
- Pedestrian Bridge
- Pedestrian Amenities



Envisioned Conditions

Boy Scout Boulevard: Open Space Daily Activities



- Pedestrian Bridges
- Public Plaza/ Event Space

Envisioned Conditions

Boy Scout Boulevard: Open Space Special Event



Envisioned Conditions

Public Realm Conditions at Boy Scout Blvd.

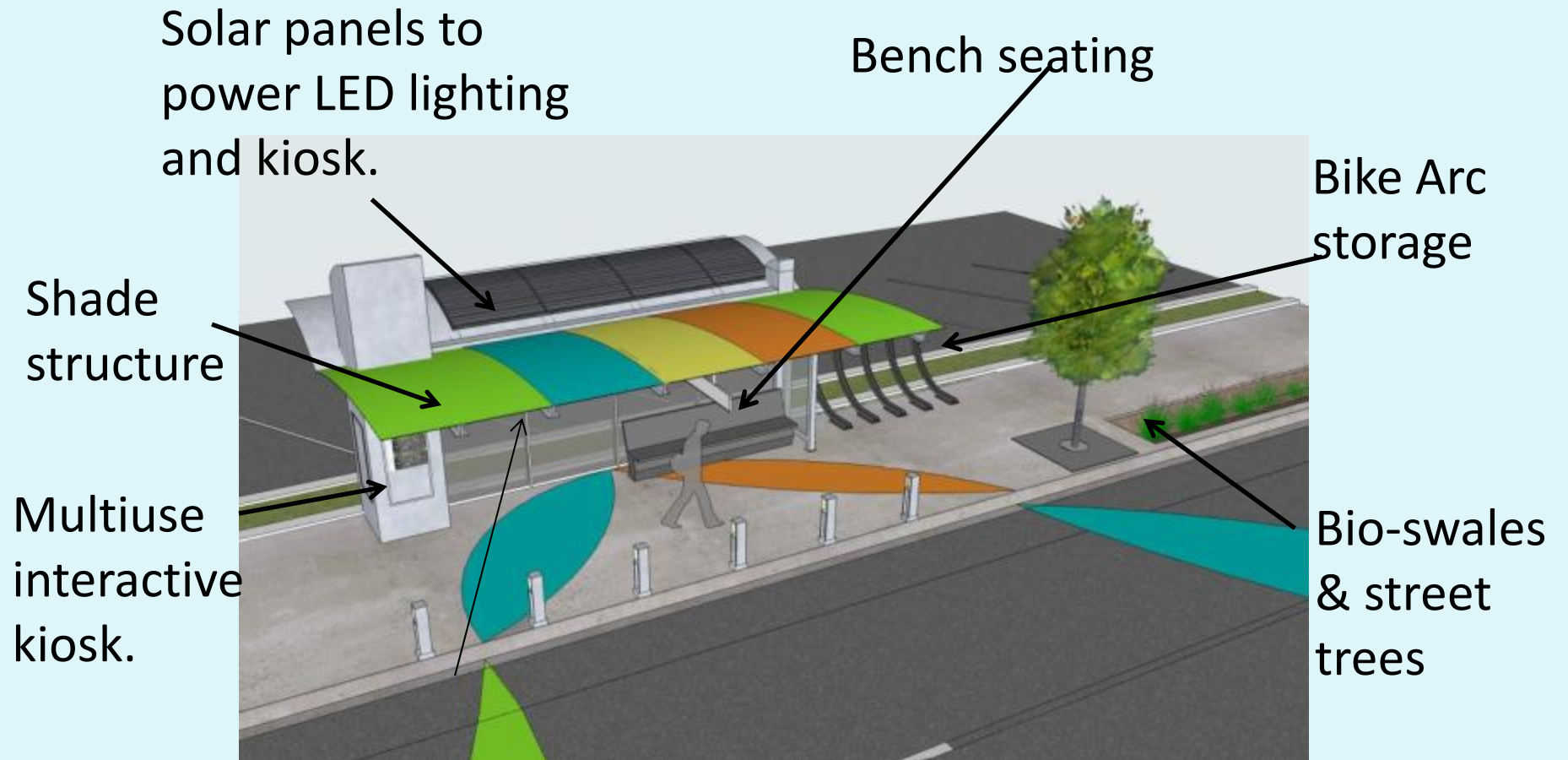


Envisioned Conditions

Public Realm Conditions at Boy Scout Blvd.



Proposed Amenities & Street Furnishings



Coordinated Street Furnishings



LIGHT
BOLLARD, BIKE
RACK, REFUSE
BIN, AND
BENCH

SHADE
STRUCTURES
WITH SOLAR
PANELS

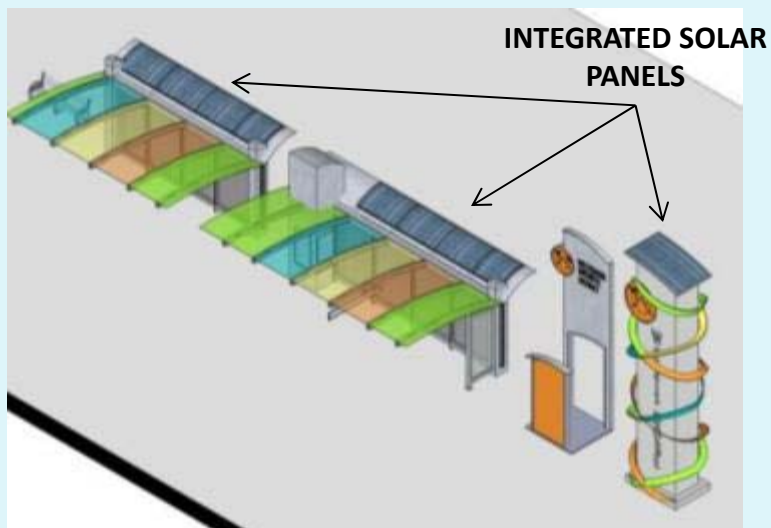
COMBINED BUS &
SHADE STRUCTURE
WITH INTERACTIVE
INFORMATION
KIOSK

PEDESTRIAN
WAYFINDING
SIGNAGE

ROADWAY
GATEWAY
ELEMENT

ROADWAY
SIGNAGE
STANDARDS

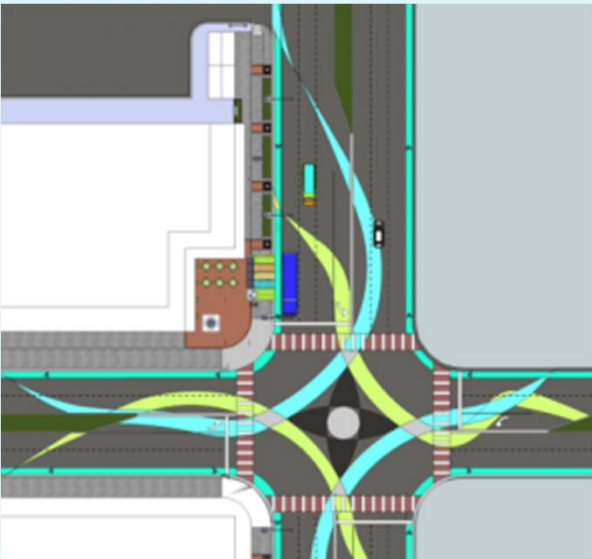
PEDESTRIAN AND
ROADWAY LIGHT
STANDARDS



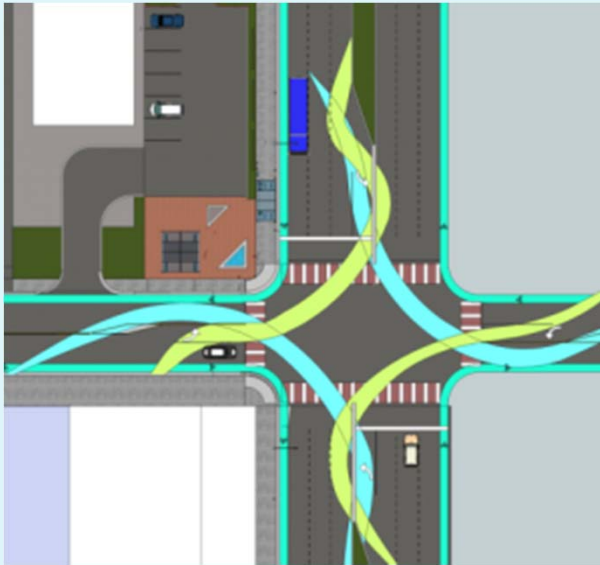
**EXAMPLE OF LIVING WALL –
PARKING LOT SCREEN**



Intersection & Sidewalk Enhancements



INTERSECTION DEFINITION AT TWO WIDE THOROUGHFARES



INTERSECTION DEFINITION AT WIDE THOROUGHFARE AND SIDE STREET

Envisioned Typical Conditions

Pedestrian-Friendly, Safe, Visually Attractive Complete Streets



- Future Buildings with Active Ground Floor uses
- Pedestrian Amenities & enhancements
- Sidewalk Planters
- Shared Roads – Vehicles, Bicyclists & Transit
- Living-Wall Parking Lot Screens
- Coordinated Sign Standards
- Reduced number of curb cuts & shared parking
- Interaction between sidewalks & buildings

Questions?