

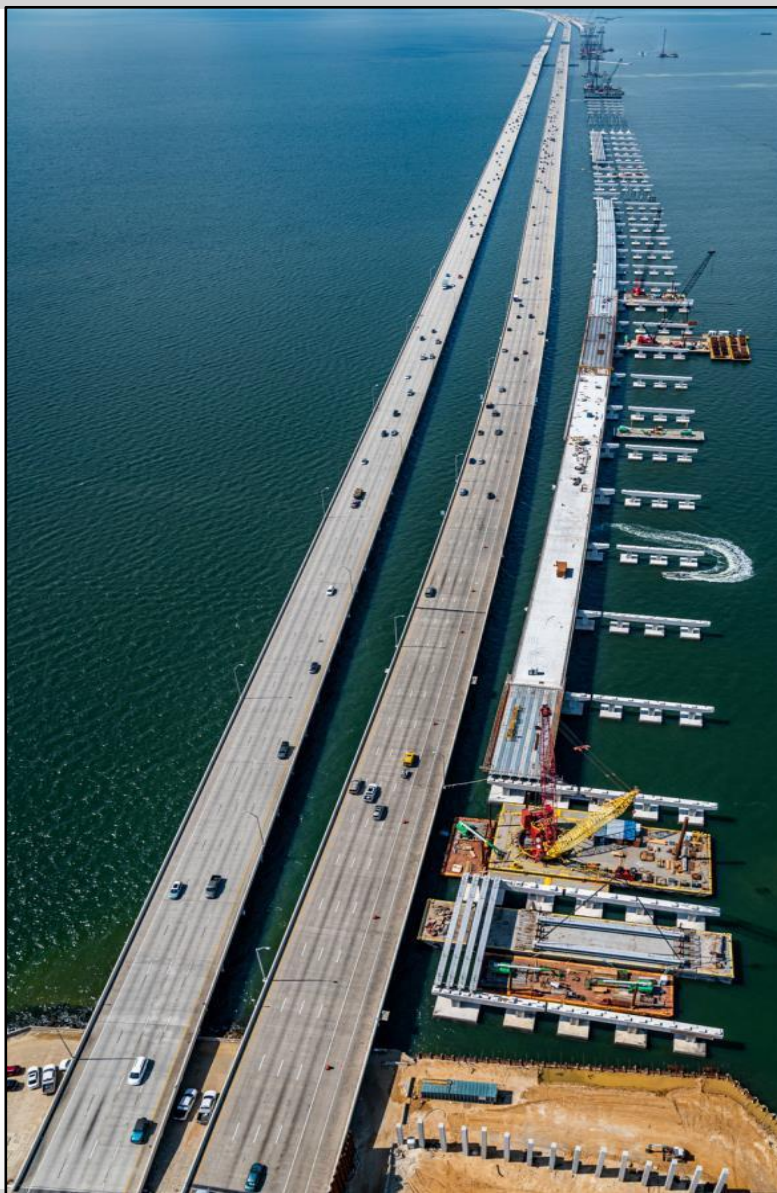
FDOT Project Updates

Tampa's Westshore Interchange and adjacent projects

Secretary David Gwynn, P.E.
Florida Department of Transportation, District 7

Westshore Alliance Development Forum, May 18, 2023

- Design-build project constructing a new SB I-275 bridge over Old Tampa Bay
- When complete, will provide drivers:
 - 4 general purpose lanes (each direction)
 - 2 tolled express lanes (each direction)
- Includes a shared use path connecting Pinellas and Hillsborough Counties
- Portion of bridge designed to support additional weight for future premium transit (up to light rail transit)



Project Cost: \$866 Million
Construction Began: Fall 2020
Expected Completion: Late 2025

Progress to date



Quick Facts

6.4-mile project length = 107 football fields

Largest bridge deck = 2.66 million sq. ft.
~double Skyway Bridge deck

3,006 bridge piles = 40 miles if placed end to end

1,727 beams = 48 miles if placed end to end

>172,000 CY of concrete = 697,700,800 lbs.



85% of pilings driven



69% of bridge footings complete



66% of bridge columns complete



57% of bridge caps complete



26% of Light Rail Transit (LRT) decks placed



- Fully reconstruct to create 4-level interchange with modern design
- Enhanced regional mobility with general use and managed lanes
- Local streets reconnected under I-275 improving access and connectivity along the local roadway network



Access to Tampa International Airport

Rendering of Proposed Interchange

Construction anticipated to begin in 2024
Estimated Cost: ~\$1 Billion

LEGEND

- AVAILABLE
- AVAILABLE BY 7/1/2024
- AVAILABLE BY 3/1/2025
- TEMPORARY CONSTRUCTION EASEMENTS (TCE)
- PERMANENT EASEMENT
- EXISTING RIGHT OF WAY
- PROPOSED RIGHT OF WAY
- EXISTING LA RIGHT OF WAY
- PROPOSED LA RIGHT OF WAY

Parcel Information

- FDOT GIS Parcel I.D.
- Right Of Way Area Required (SF)

**RIGHT OF WAY ACQUIRED
BY CITY OF TAMPA**

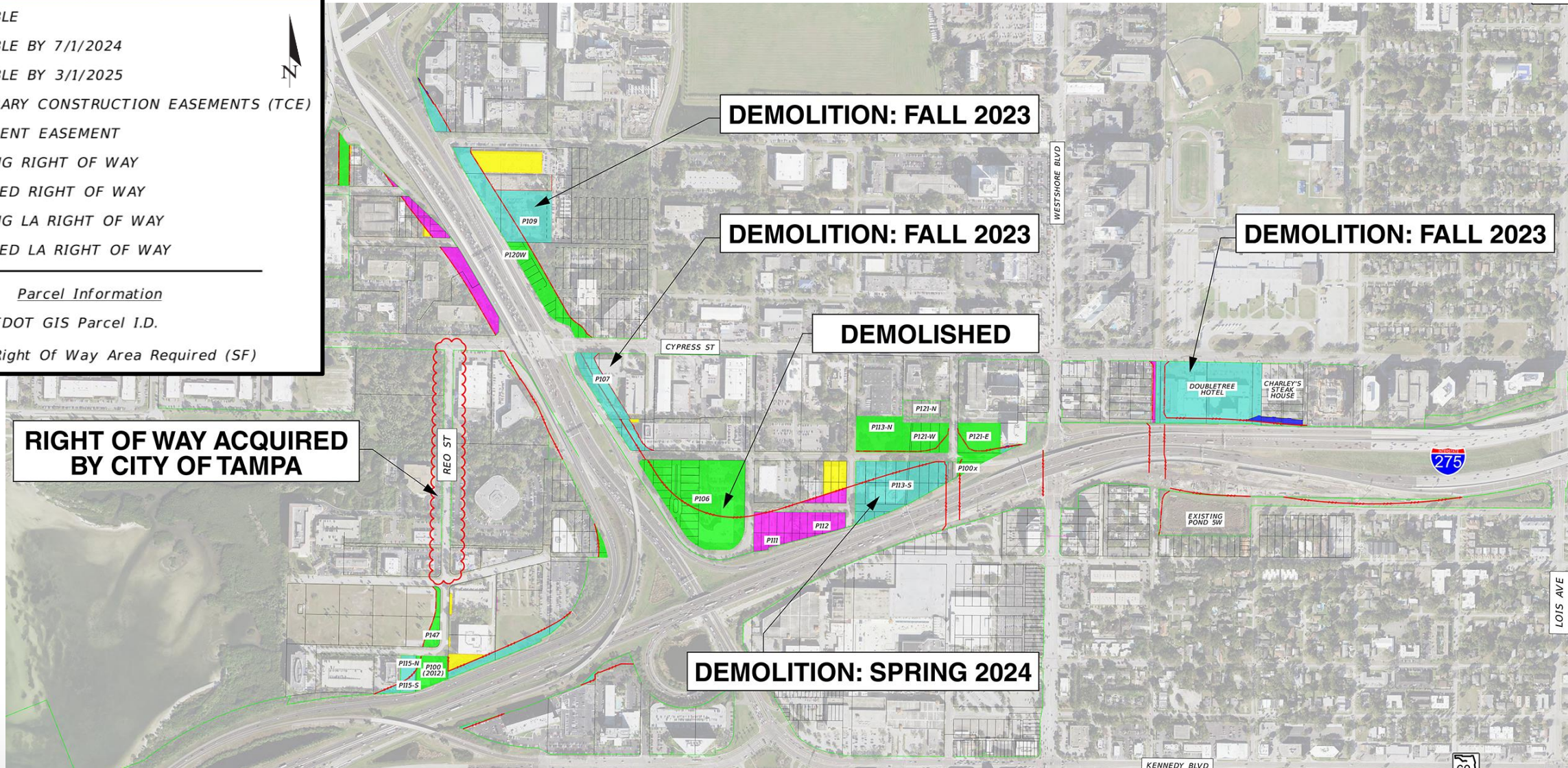
DEMOLITION: FALL 2023

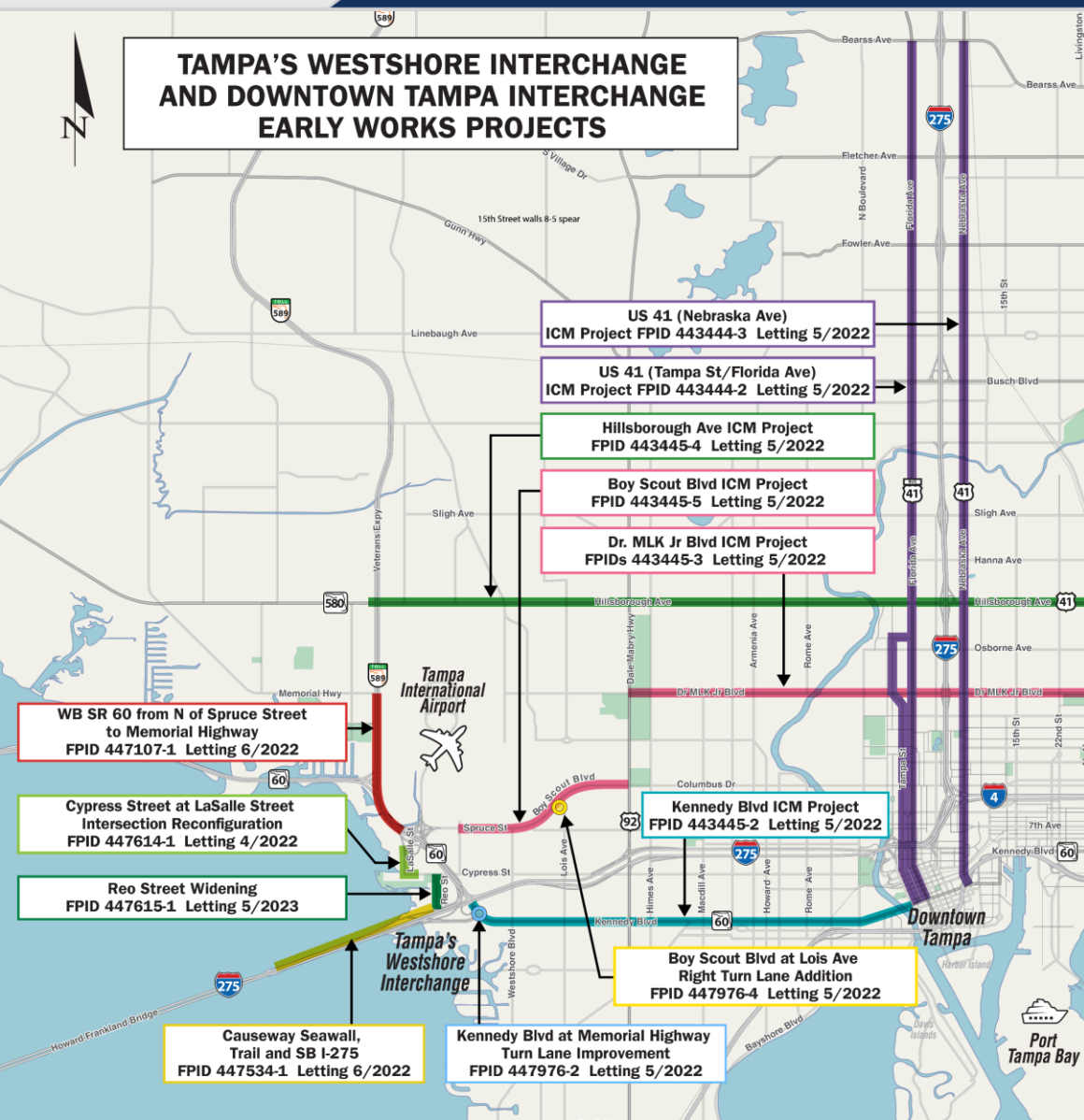
DEMOLITION: FALL 2023

DEMOLISHED

DEMOLITION: FALL 2023

DEMOLITION: SPRING 2024





- Multiple projects completing improvements to facilitate mobility during construction
- Improvements will enhance traffic operations on the local street network

Tampa's Westshore Interchange and Downtown Tampa Interchange Early Works Projects Schedule

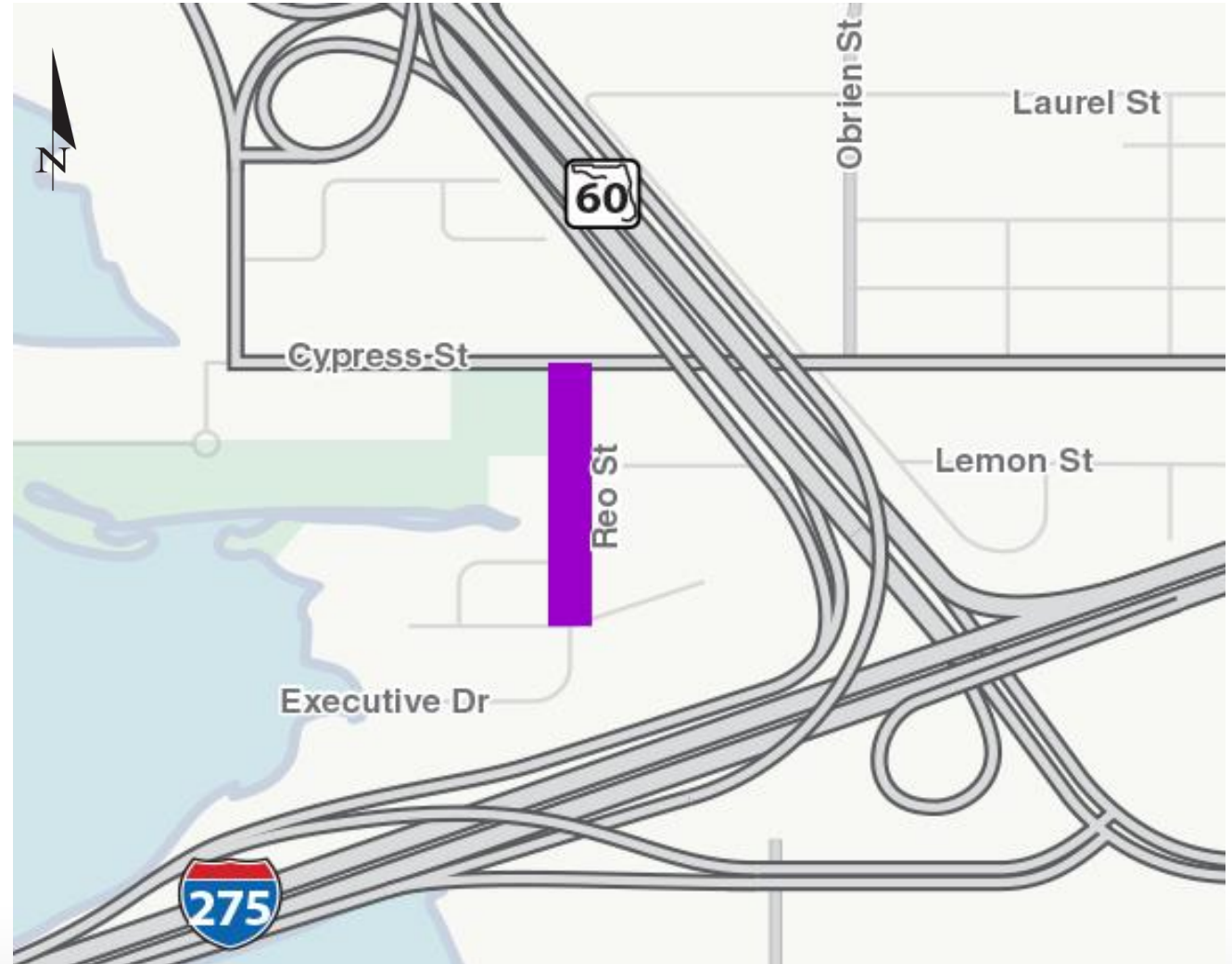
Contract	FISCAL YEAR				
	2022	2023	2024	2025	2026
Causeway Seawall, Trail and SB I-275 (DBB)					
Cypress Street at LaSalle Street Intersection Reconfiguration (DBB)					
Reo Street Widening (DBB)					
WB SR 60 from N of Spruce Street to Memorial Highway (ASDB)					
Boy Scout Blvd at Lois Ave Right Turn Lane Addition (DBB)					
Kennedy Blvd at Memorial Highway Turn Lane Improvements (DBB)					
Kennedy Blvd ICM Project (ASDB)					
Hillsborough Ave ICM Project (ASDB)					
Boy Scout Blvd ICM Project (ASDB)					
Dr. MLK Jr Blvd ICM Project (ASDB)					
US 41 (Tampa St/Florida Ave) ICM Projects (ASDB)					
US 41 (Nebraska Ave) ICM Projects (ASDB)					

DBB: Design-Bid-Build ASDB: Adjusted Score Design-Build

Note: Durations for Design-Build projects include design

- Widen Reo Street from 2-lanes to 4-lanes
- Widen Cypress Street for turn lanes
- Signalize Reo Street/Cypress Street intersection
- Shared use path connectivity
- Drainage improvements
- Utility relocations
- Improvements will help with traffic detours during interstate reconstruction
- Project will complete the trail network from Howard Frankland Bridge to Cypress Point Park

Construction to begin: Late 2023





New right-turn lane at Lois Avenue

Construction began: November 2022
Completed: March 2023

Once complete, this project will provide:

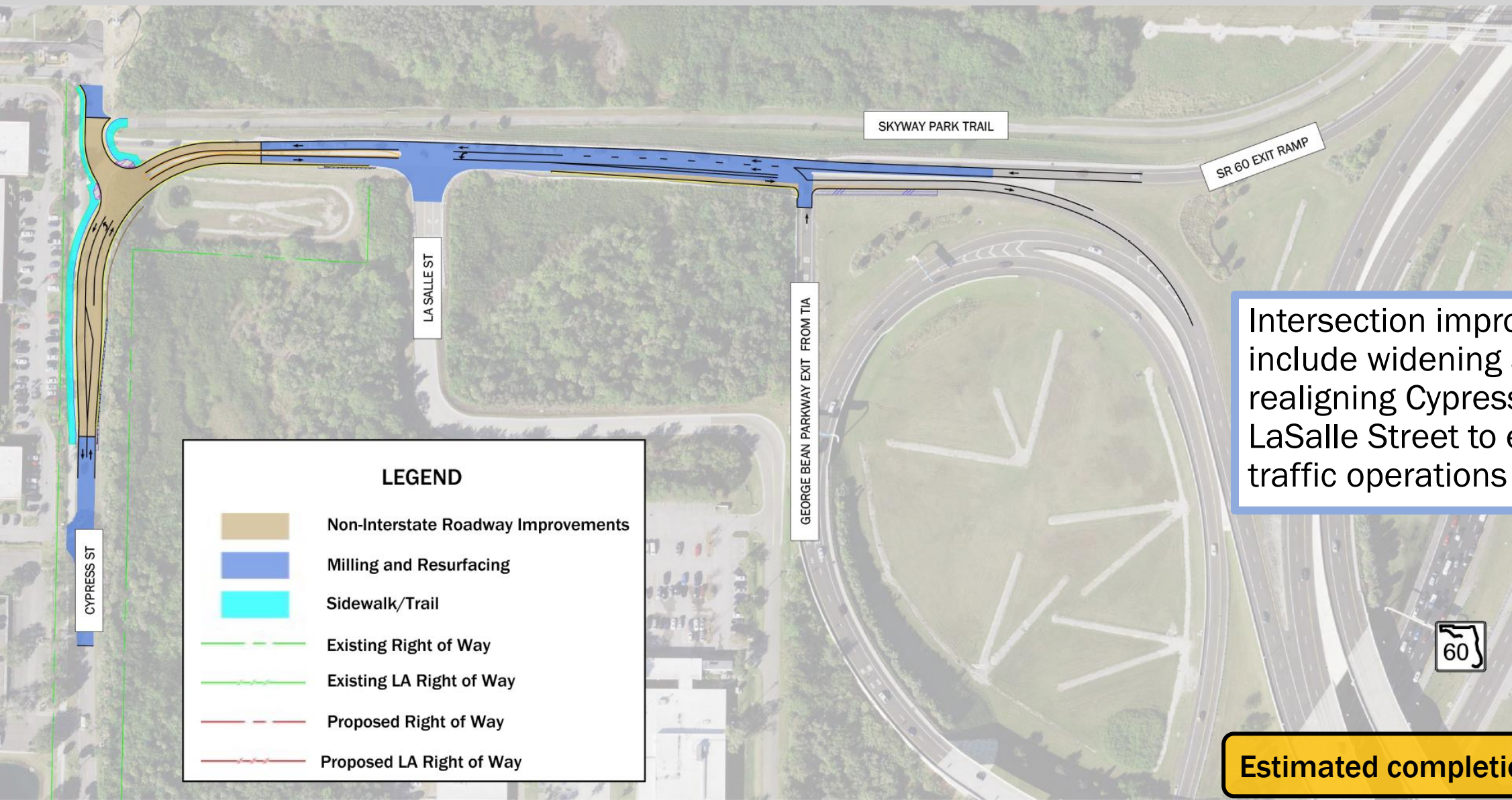
- 3 right turn lanes from W. Kennedy Boulevard to SR 60
- 3 left turn lanes from SR 60 to W. Kennedy Boulevard
- Hurricane-resistant traffic signal poles
- New overhead sign structures



Spring 2023 construction progress



Anticipated completion: Summer 2023



Intersection improvements include widening and realigning Cypress Street at LaSalle Street to enhance traffic operations and safety

Estimated completion: Fall 2023

- This project will construct a seawall and shared-use path along the north side of I-275 between Reo Street and the Howard Frankland Bridge
- Future lanes on southbound I-275 will connect to Tampa's Westshore Interchange project



**Anticipated completion:
Summer 2025**



- Adding one westbound lane on SR 60 from George Bean Parkway to the Courtney Campbell Causeway
- Adding a new ramp from westbound SR 60 to Independence Parkway



Westbound SR 60 widening from Spruce St/TIA to Memorial Highway (April 2023)

Southbound I-275 to Eastbound I-4

- Widen exit ramp from SB I-275 to EB I-4 to 2 lanes
- Relocated exit to 14th/15th Streets
- Add a 5th lane (auxiliary) along EB I-4 between I-275 and the Selmon Expressway exit
- Provide a 2-lane exit to the Selmon Expressway

Westbound I-4 to Northbound I-275

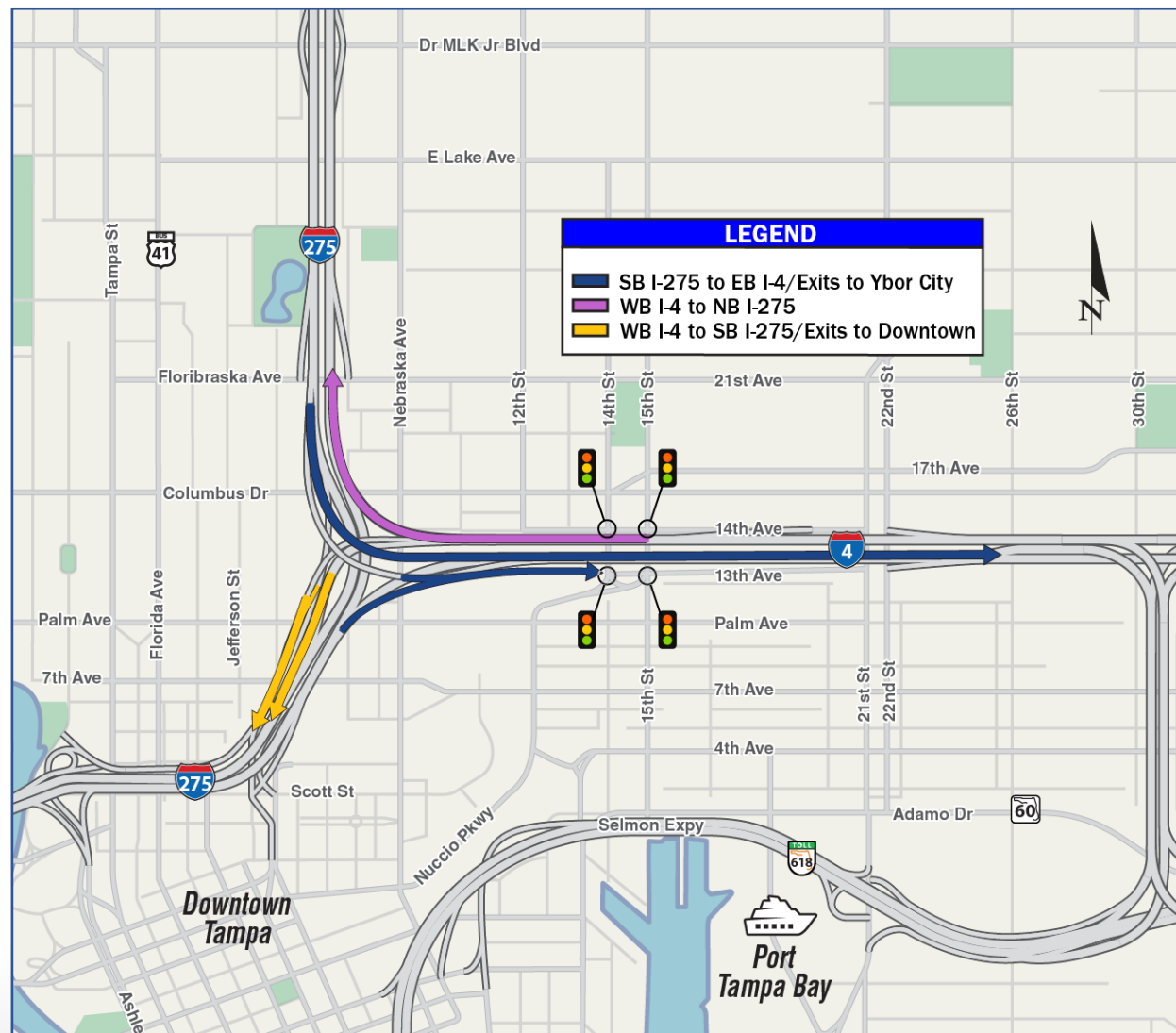
- Widen existing 1-lane ramp from I-4 to NB I-275 to 2 lanes

Westbound I-4 to Southbound I-275

- Widen 2-lane ramp from I-4 to SB I-275 to 3 lanes
- Widen shoulders on SB I-275 from Palm Avenue to Jefferson Street

Construction to begin: Summer 2023

Safety and Operational Improvements





**May is motorcycle safety awareness month.
Share the road and keep riders safe!**

For more information, visit www.trafficsafetymarketing.gov

For statistics, visit <https://cdan.nhtsa.gov/>

**To learn more, visit
FDOTTampaBay.com or TampaBayNext.com**

Thank you!



Downtown Tampa Interchange



Tampa's Westshore Interchange